

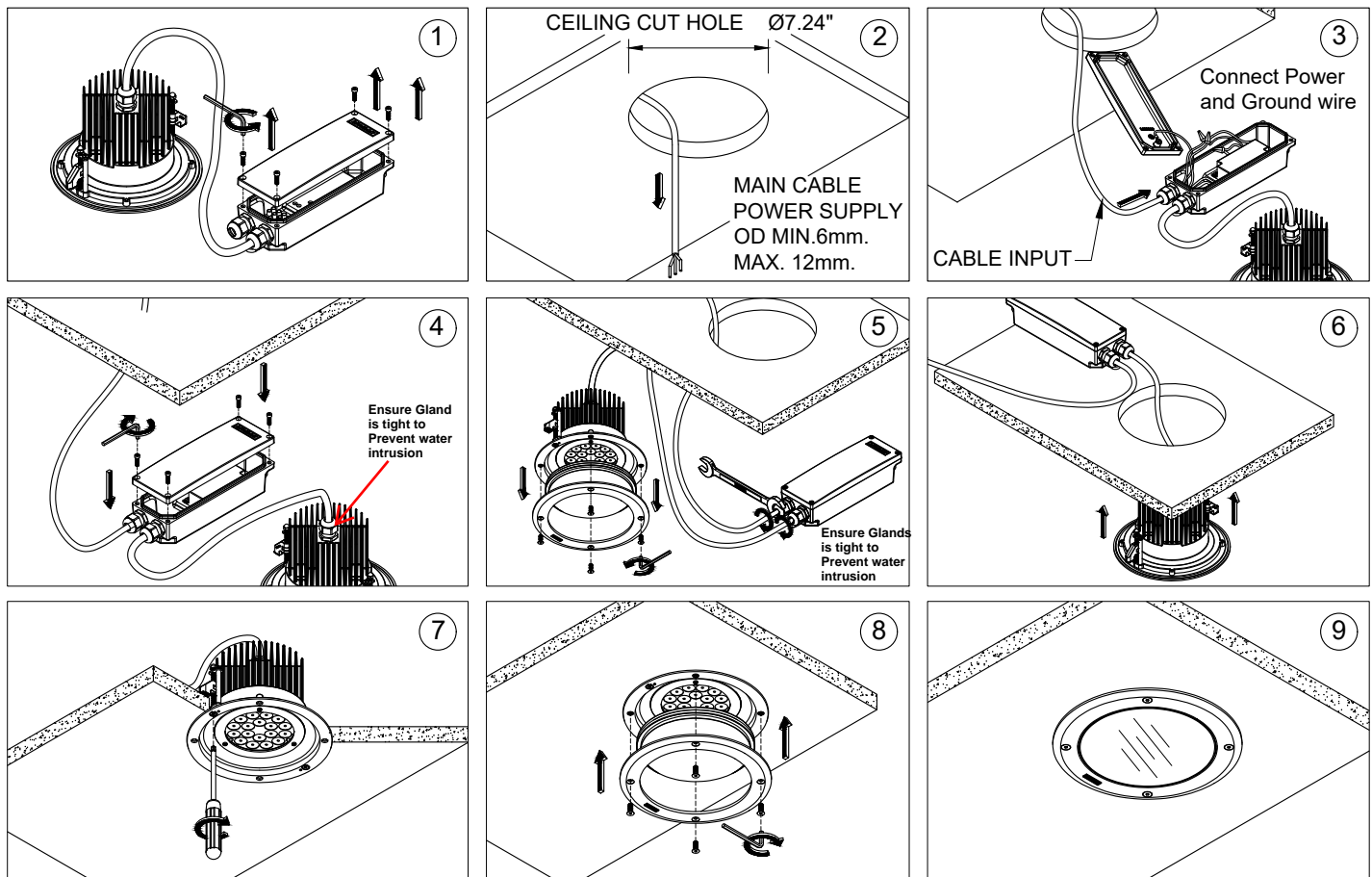
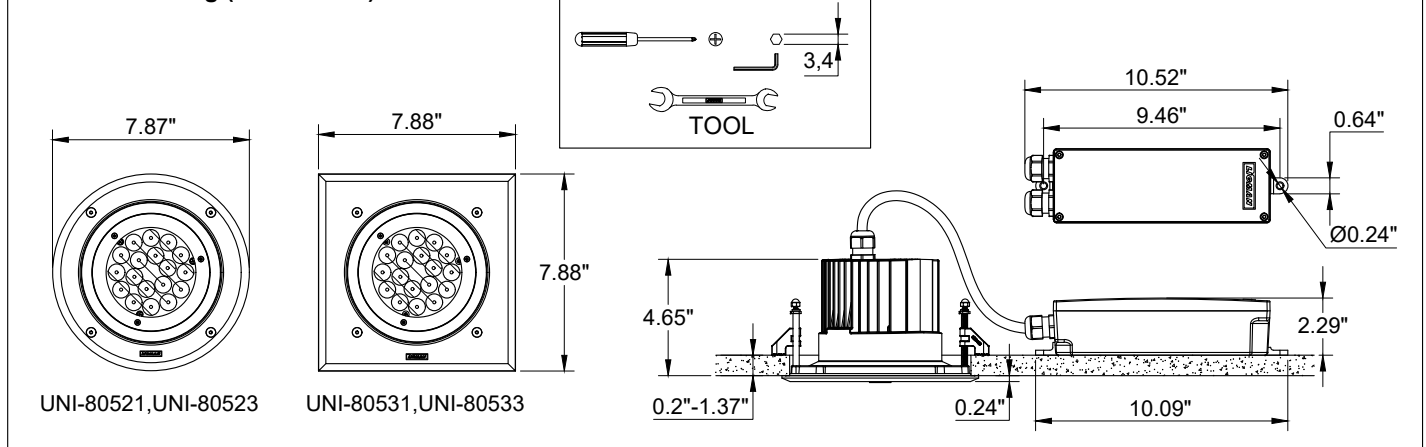
INSTALLATION AND SERVICE MANUAL

LIGMAN
NORTH AMERICA

For Installation of Nikon Recessed Exterior Downlight Round Dia 7.87" and Square 7.87" LED Model. UNI-80521, UNI-80523 and UNI-80531, UNI-80533.

Product drawing (dimensions)

SUITABLE FOR WET LOCATIONS



Notice to Installer

Wiring Instruction ⚠ Warning:

- Risk of Fire and Electrical Shock, This fixture must be installed only by a qualified electrician, Installation must adhere to the National Electrical Code (NEC) and all applicable local and federal regulations.
- Always disconnect power before servicing the fixture.

Ligman Lighting USA

7144 NE Progress Court, Hillsboro
Oregon, 97124, USA
Tel : 503 645 0500 | Fax : 503 645 8100

www.ligmanlightingusa.com

UNI-80521 29/03/24 REV.4
1/1

FM-TS-13-1/13-05-2563/Rev.6